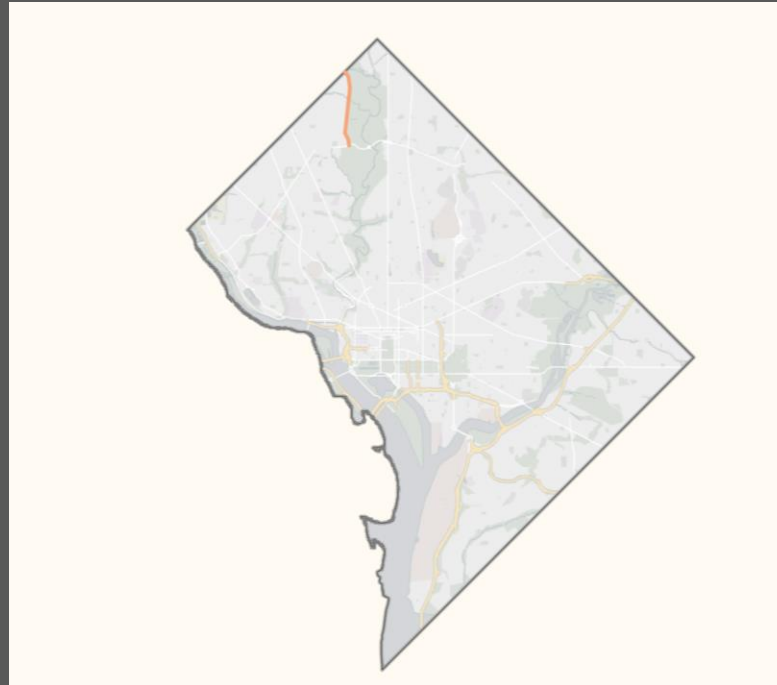


DISTRICT DEPARTMENT OF TRANSPORTATION



Oregon Avenue, Source: DDOT



Project Location, Source: DCGIS



Oregon Avenue, Source: DDOT

Oregon Avenue Drainage Improvements

DISTRICT DEPARTMENT OF TRANSPORTATION

Oregon Avenue Drainage Improvements

Community Presentation
January 2026

Meeting Agenda

- Project Team
- Background & Purpose
- Drainage Improvements
- Maintenance of Traffic Plan
- Project Schedule



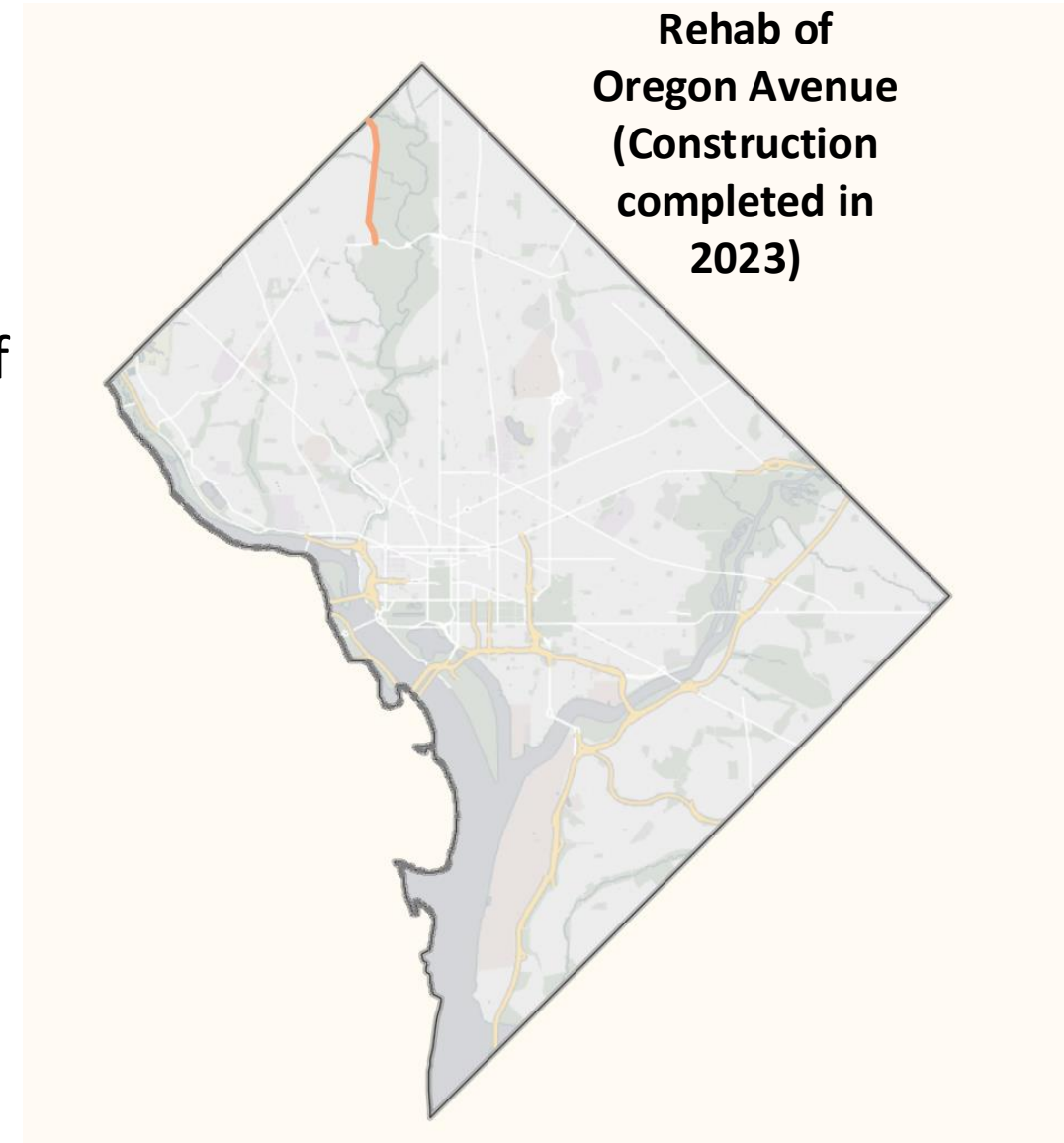
Oregon Ave drainage structure along Oregon Avenue NW, Source: DDOT

Project Team

- Tshreya Bhattarai, PE (DDOT Project Manager)
- Mohammad Dahir, PE (DDOT Supervisory Civil Engineer)
- Christian Pineiro (DDOT – Community Engagement)
- Bharat Bhargava, PE (Consultant Lead Designer)
- Joseph Chukwueke (Consultant Construction Manager)

Legacy Project: Oregon Ave Rehabilitation Project (construction completed in 2023)

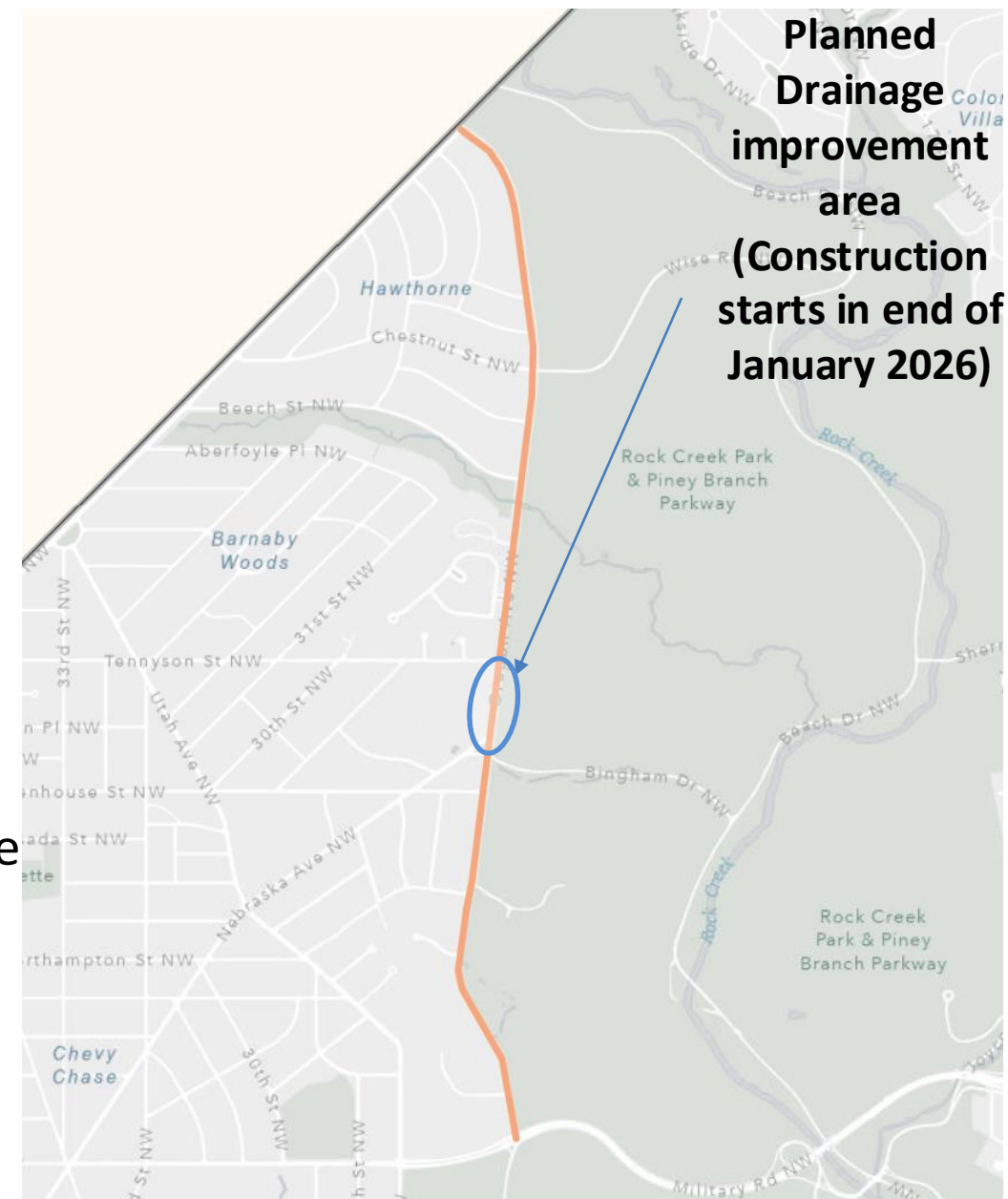
- This project was designed to perform roadway improvements along Oregon Ave NW from Military Rd to Western Ave and the installation of a new sidewalk on the west side.
- Other features included new curb and gutter, streetlights, signage, pavement markings, drainage structures and system, LID facilities and a new bridge over Pinehurst Run.
- These improvements are recommended under the Environmental Assessment Alternative 3 Modified.



Project Location, Source: DCGIS

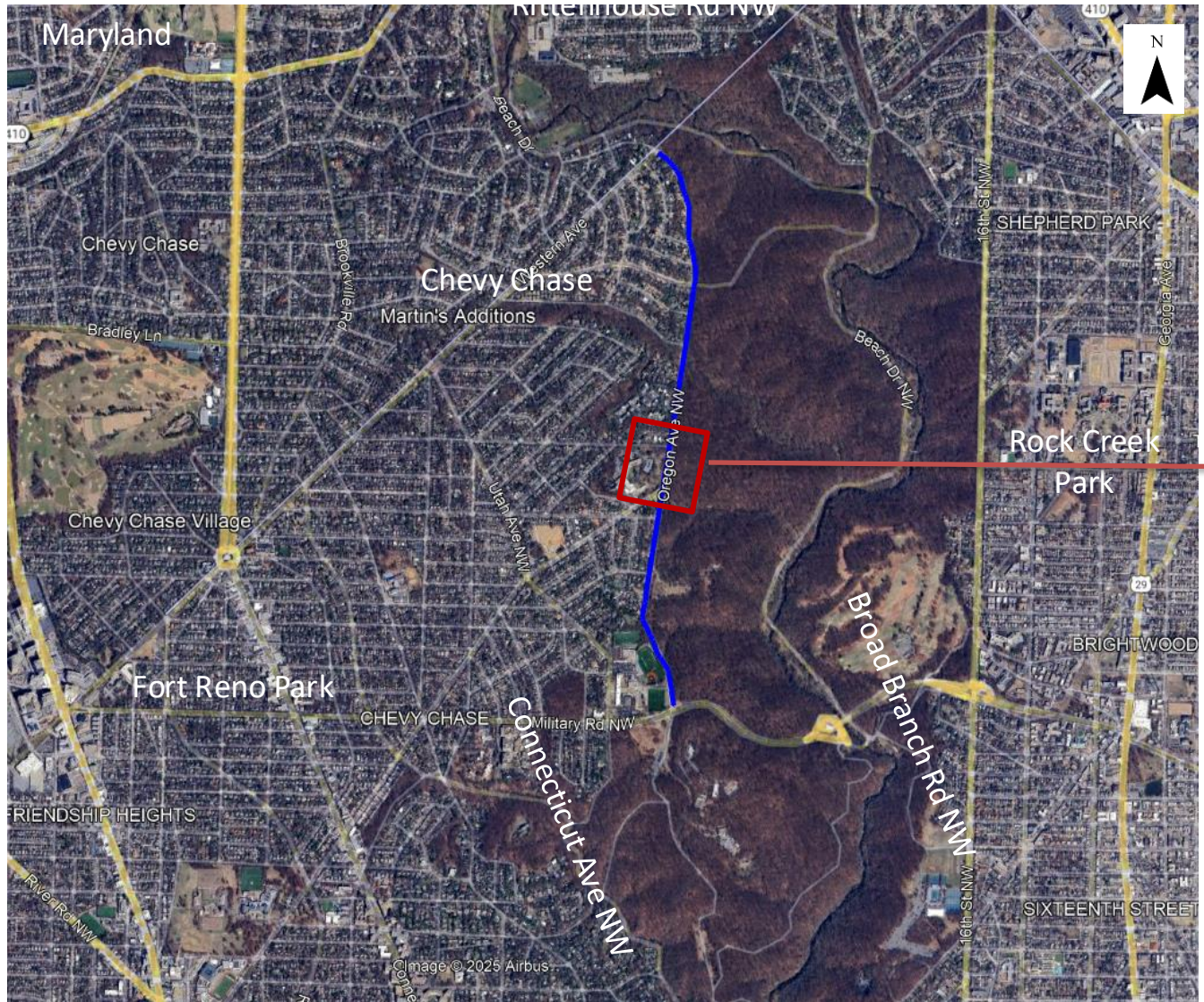
Project Background & Purpose

- Nearing the completion of the construction, a storm event caused a portion of the recently constructed Stormwater Management System between Nebraska Ave NW and Lindsay Drive NW to overflow and sustain some damages.
- Following the event, subsequent storm events have eroded portions behind the curb line and sidewalks.
- The drainage improvement plans propose an improved storm drain design system to capture and convey the stormwater to the existing pipe system and mitigate the erosions from future storm events.
- The project duration is 16 weeks. The construction will start Late-January and will be completed Mid-April

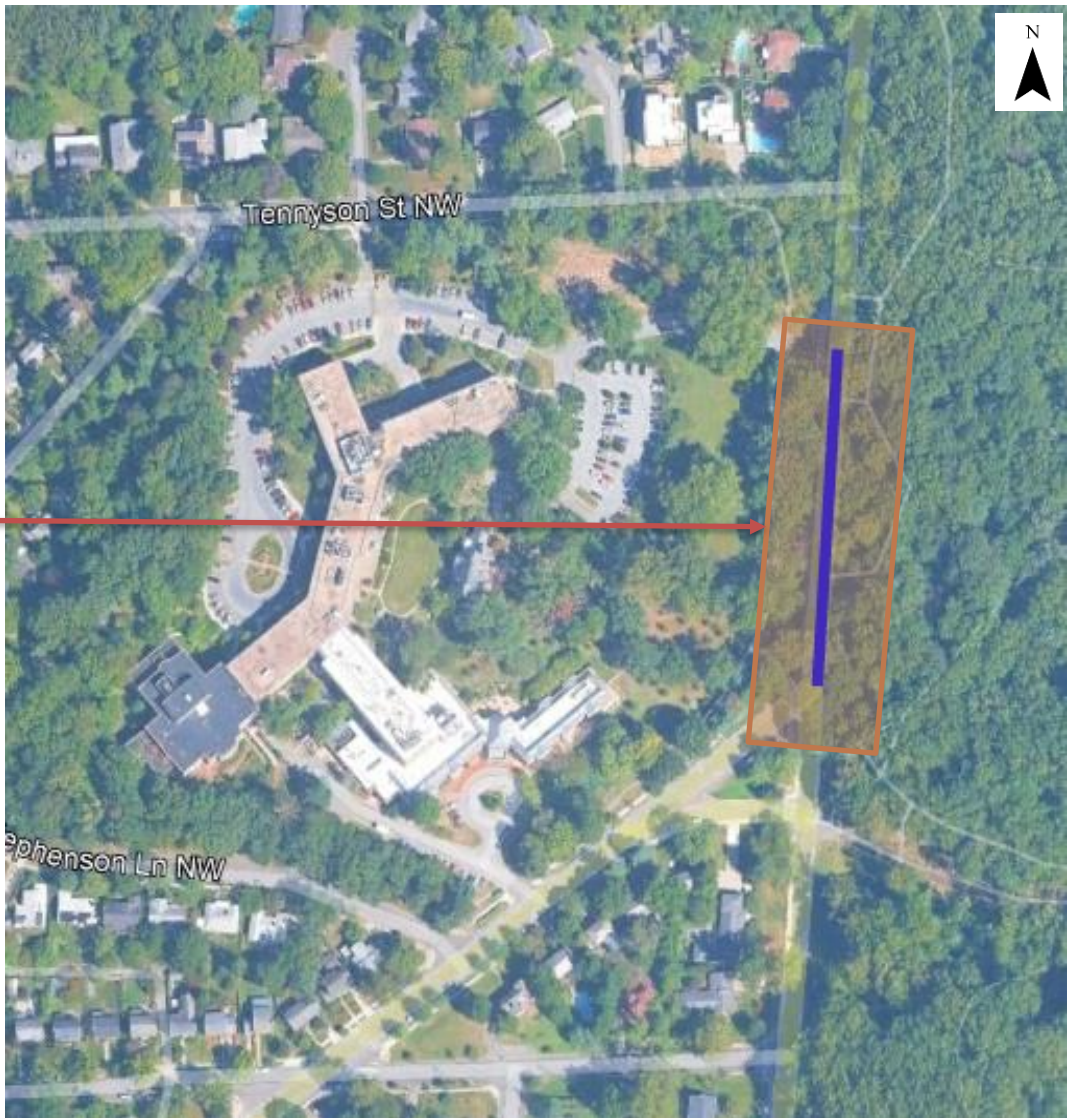


Project Location, Source: DCGIS

Rehabilitation of Oregon Avenue (Construction completed in 2023)



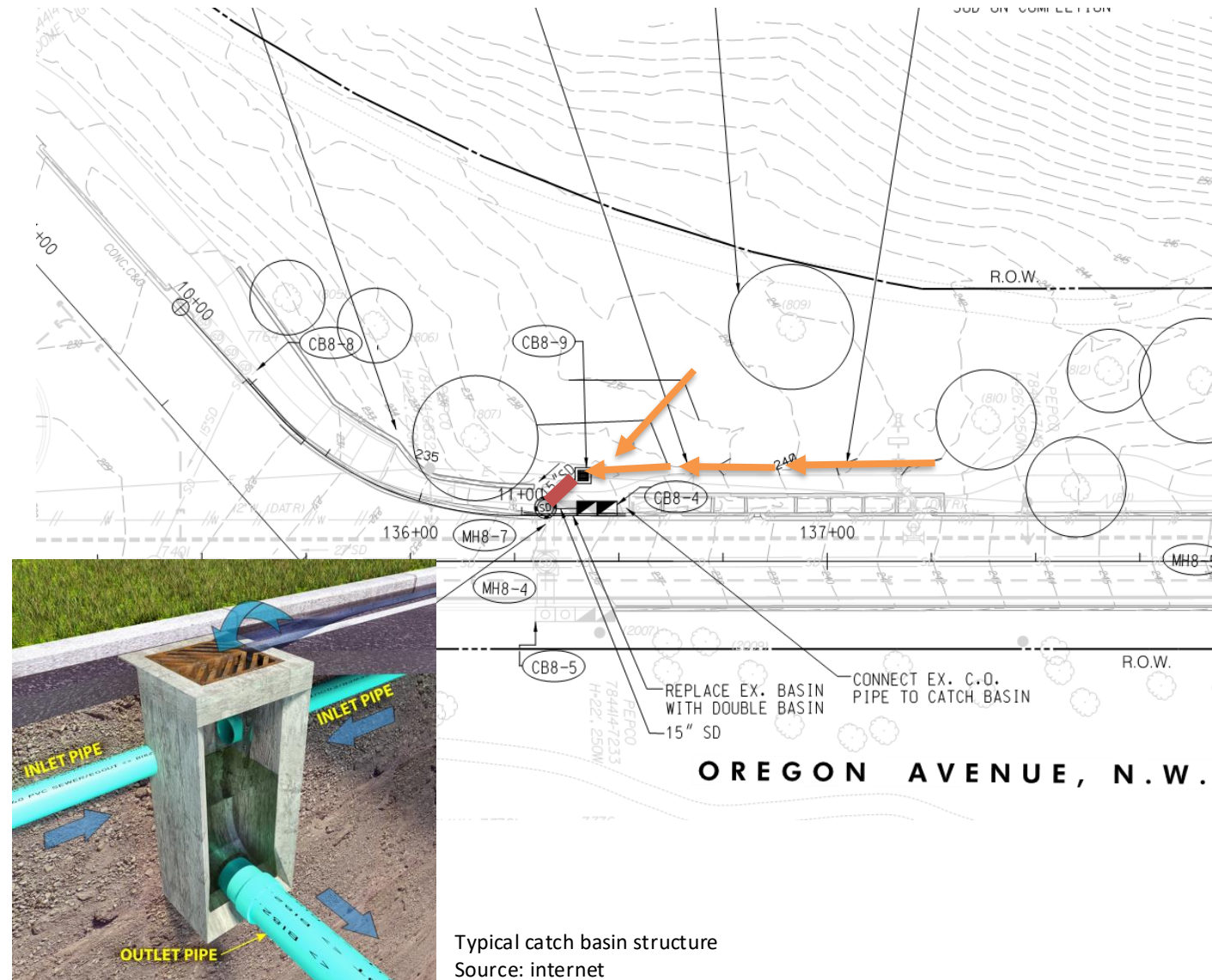
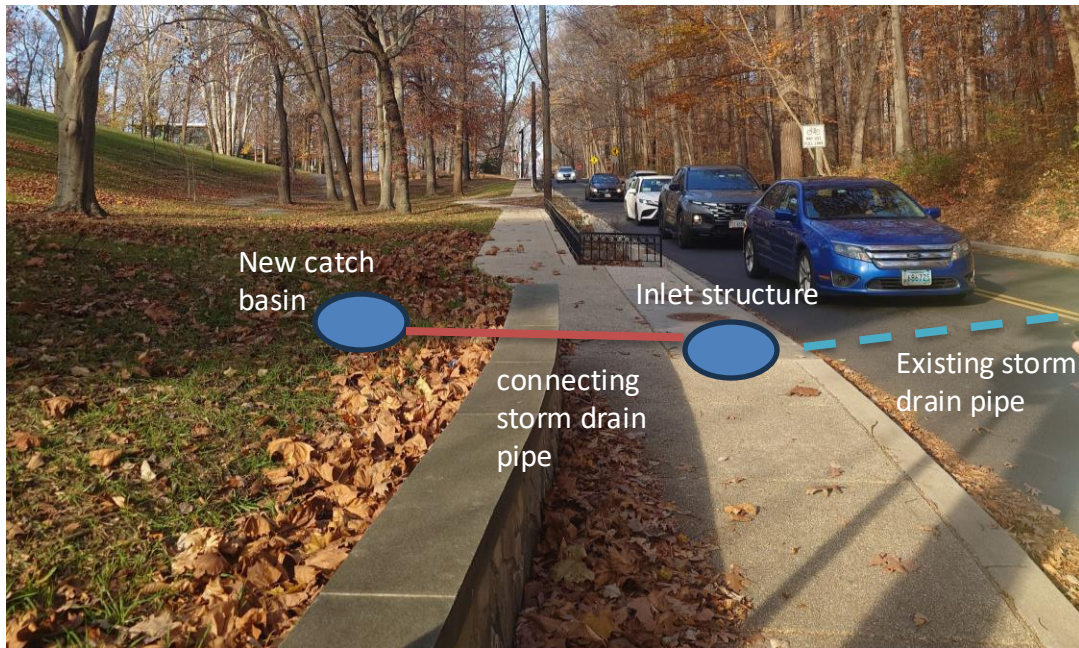
Drainage Improvement planned for 2026



Drainage Improvements

The planned improvements include:

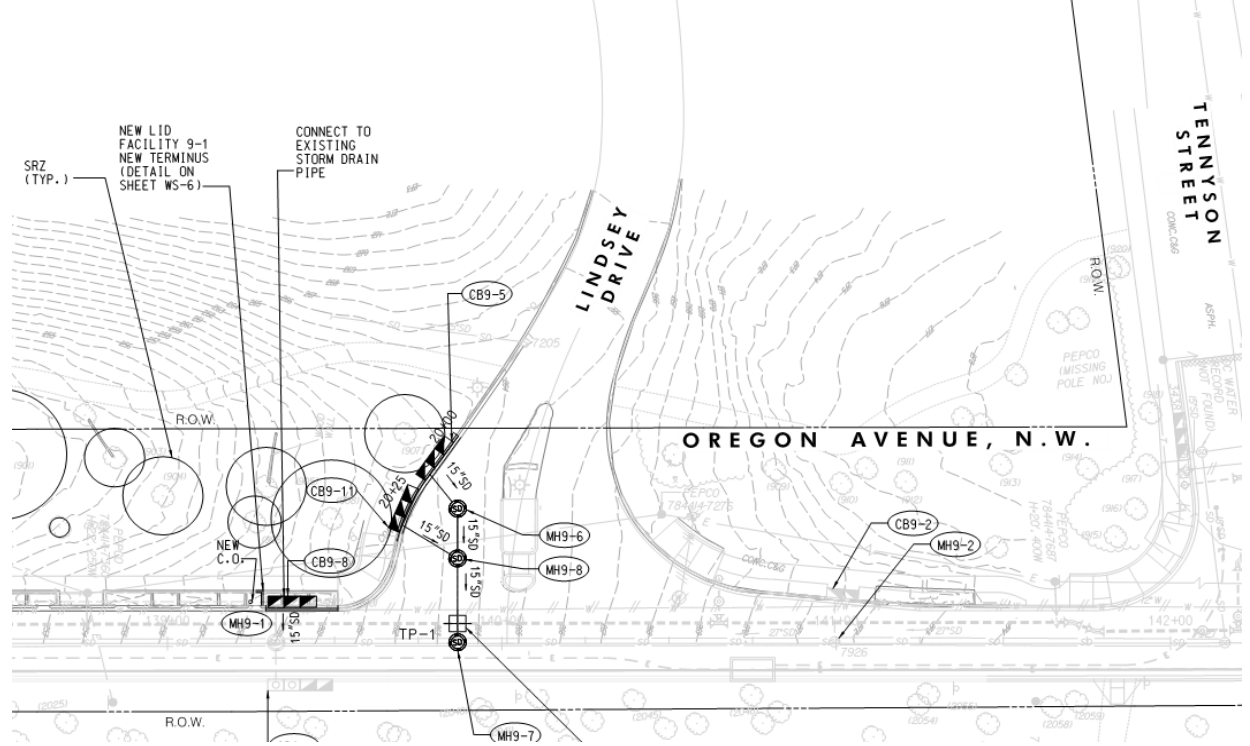
- Grading of green areas behind the curbline and sidewalks to redirect all the stormwater to a new inlet.
- Installation of new catch basin facility where it is connected to existing storm drainpipe.



Typical catch basin structure
Source: internet

Drainage Improvements (continued)

The planned improvements at Lindsay Drive will include installation of three new catch basin structures, new storm drain pipes connecting the catch basins to existing storm drain pipes and manhole structures



Maintenance of Traffic (MOT) Plan

- Transportation Management Plan will be implemented during the construction to minimize and mitigate the construction impacts of the project. These strategies are designed to enhance the safety and minimize congestion for motorists, pedestrians, and workers within the work zones and in the surrounding roadway network during construction.
- Traffic will be closed within the project limits. Detour routes and signage will be provided for motorists and pedestrians.
- The lane closure hours are: 9:30AM-3:30PM, MONDAY-FRIDAY



How Traffic Will Flow

- **The road stays open.** Oregon Avenue southbound and northbound lane will be intermittently closed during the construction hours. Flagsmen will be present all the time during the construction to provide safe access to the vehicular traffic on the bi-directional lane.
- **Lanes shift slightly** around the work zone using cones, barrels, and temporary pavement markings.
- **Open lane remains at least 11 feet wide** to safely accommodate cars, buses, and emergency vehicles.
- **A buffer zone** separates traffic from the construction area to protect workers.
- **Warning signs and message boards** will alert drivers before they reach the work zone.

Pedestrian Access

- Pedestrians will always have a **safe, continuous route** through the area.
- During construction behind the curb near the Nebraska Ave. NW, **sidewalk will be temporarily unavailable**. Flaggers will be on site during those instances to aid the pedestrians for the safe passage.
- **At Lindsay Dr., Pedestrian Channelizers and Barricades** will guide pedestrians along the correct path and keep them separated from traffic.
- All temporary pedestrian routes meet ADA accessibility requirements.



Safety Measures

- Open trenches will be **covered or barricaded** at the end of each workday.
- All temporary signs will be **securely supported and clearly visible**.
- Traffic control devices will be inspected daily to ensure proper placement.
- Emergency access will be maintained at all times.



What to Expect During Phase 1-4 of MOT

- Cones, barrels, and barricades along the roadway
- A shifted centerline and temporary lane markings
- Occasional delays during peak hours
- Construction noise during permitted work hours
- Workers directing traffic when needed
- Lane closure is between 9:30 to 3:30 Monday through Friday

How You Can Help

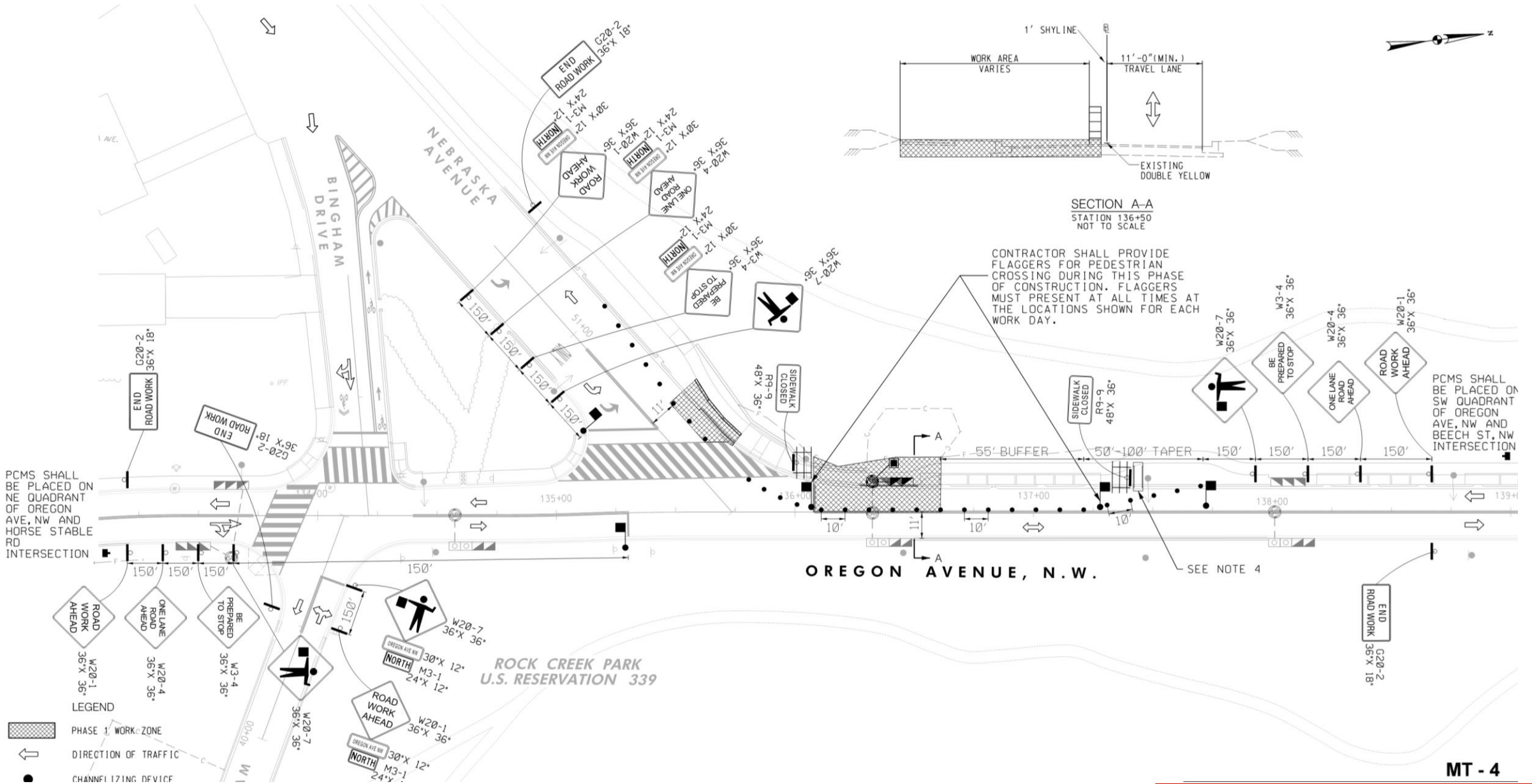


- Slow down when approaching the work zone
- Follow posted signs and lane shifts
- Use the marked pedestrian routes
- Allow extra travel time during construction

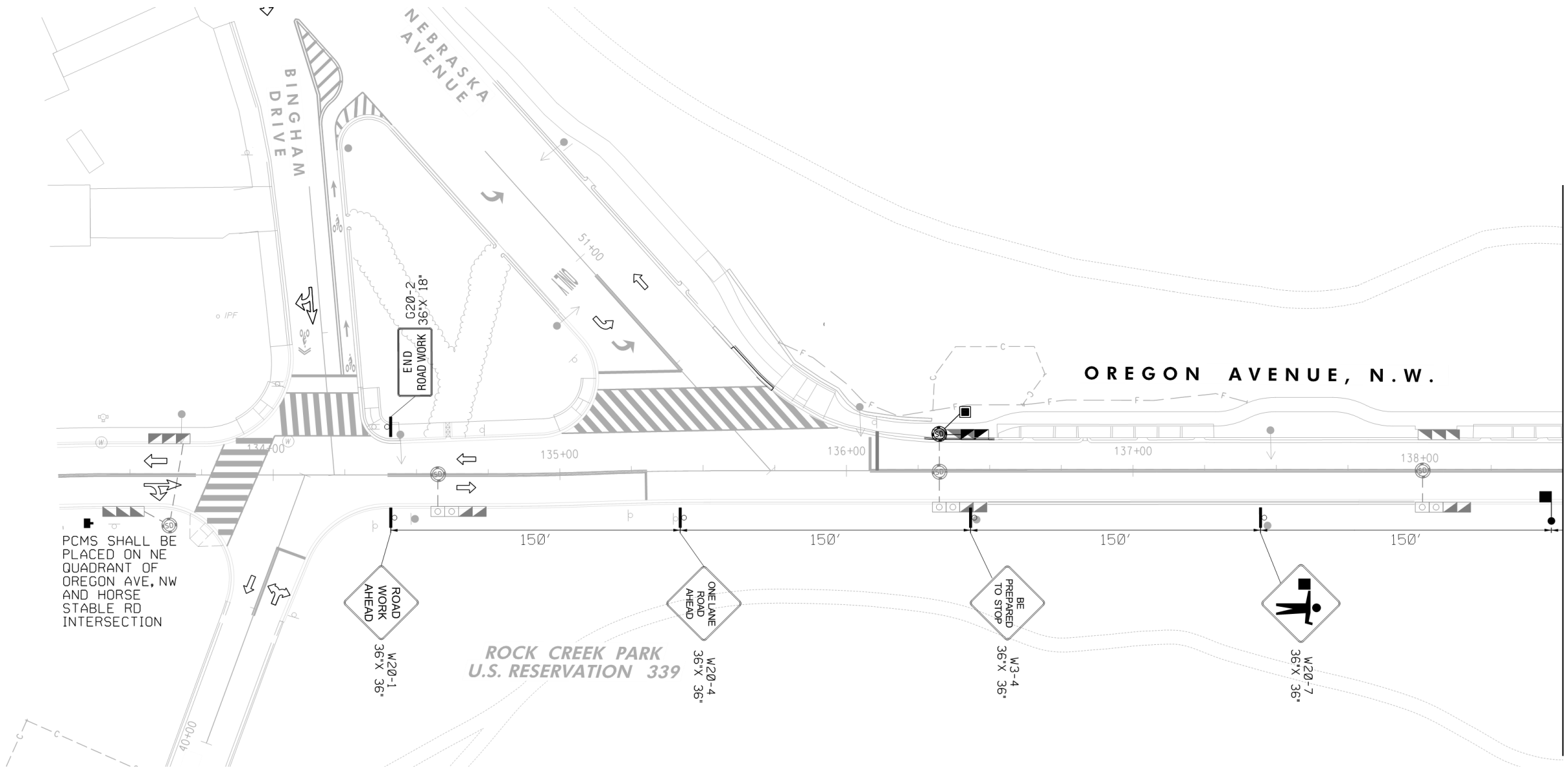
Project Goal

To improve safety, drainage, and roadway conditions along Oregon Avenue NW while keeping the community moving safely throughout construction

Maintenance of Traffic Plan (Phase 1; Estimated Duration 3-4 weeks)

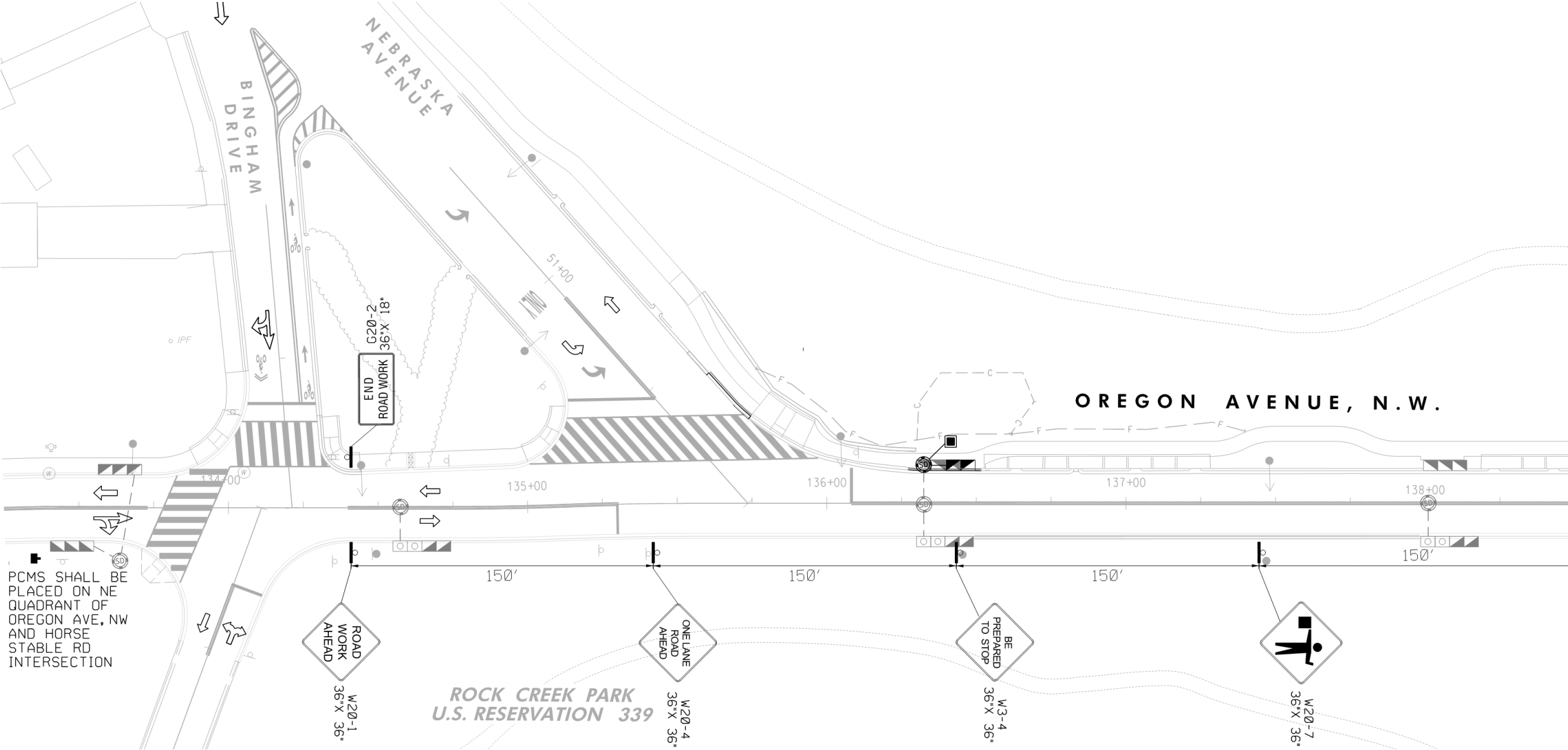


Maintenance of Traffic Plan (Phase 3; Estimated Duration 10-12 weeks)



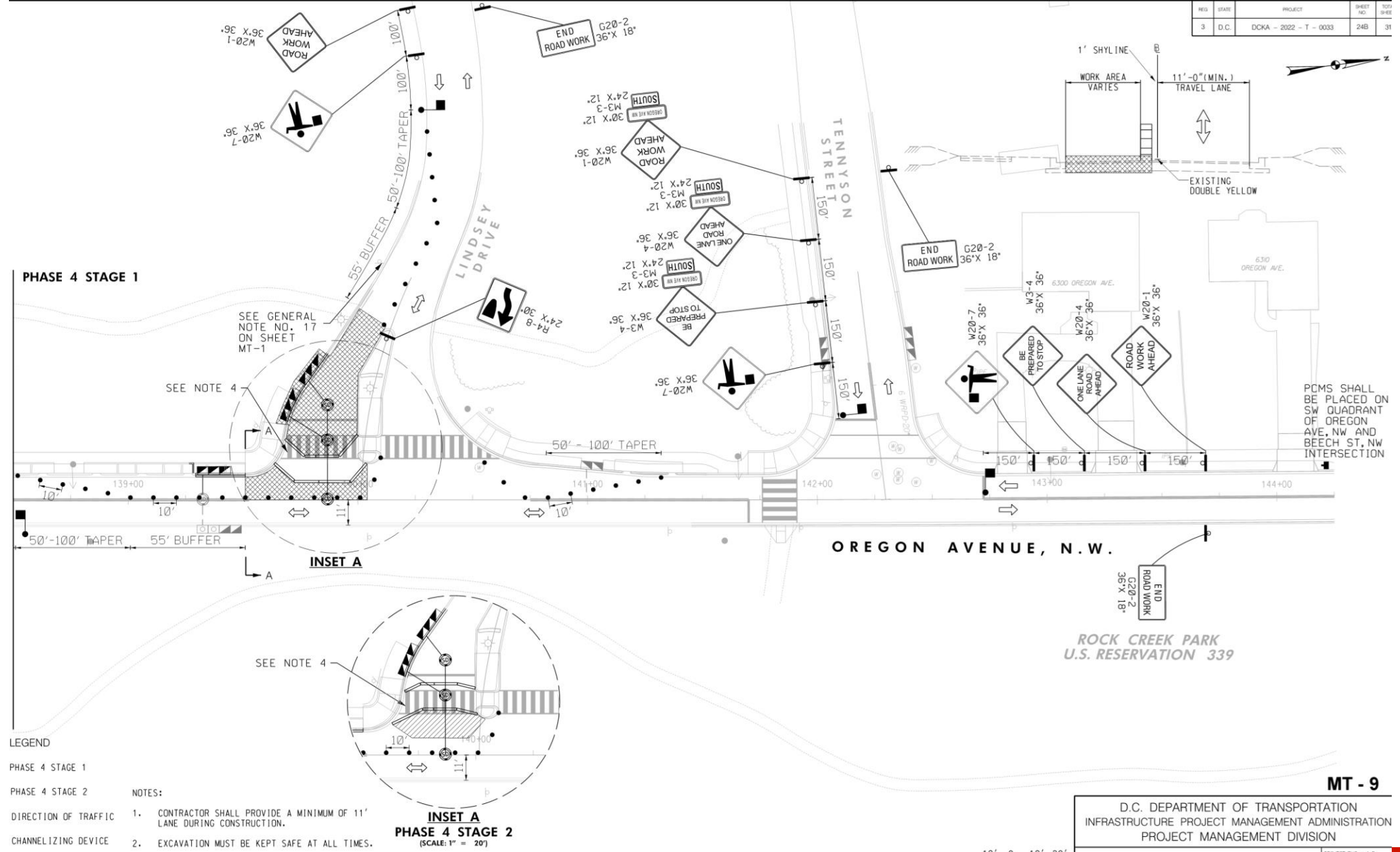
MATCH LINE STA. 138+50.00 SEE DWG. MT - 7

Maintenance of Traffic Plan (Phase 4; Estimated Duration 6-8 weeks)



Maintenance of Traffic Plan (Phase 4; Estimated Duration 6-8 weeks)

REG.	STATE	PROJECT	SHEET NO.	TOTAL SHEETS
3	D.C.	DCKA - 2022 - T - 0033	24B	31



PCMS SHALL BE PLACED ON SW QUADRANT OF OREGON AVE, NW AND BEECH ST, NW INTERSECTION

PHASE 4 STAGE 1

SEE GENERAL NOTE NO. 17 ON SHEET MT-1

SEE NOTE 4

INSET A

SEE NOTE 4

INSET A PHASE 4 STAGE 2 (SCALE: 1" = 20')

LEGEND

PHASE 4 STAGE 1

PHASE 4 STAGE 2

DIRECTION OF TRAFFIC
CHANNELIZING DEVICE

NOTES:

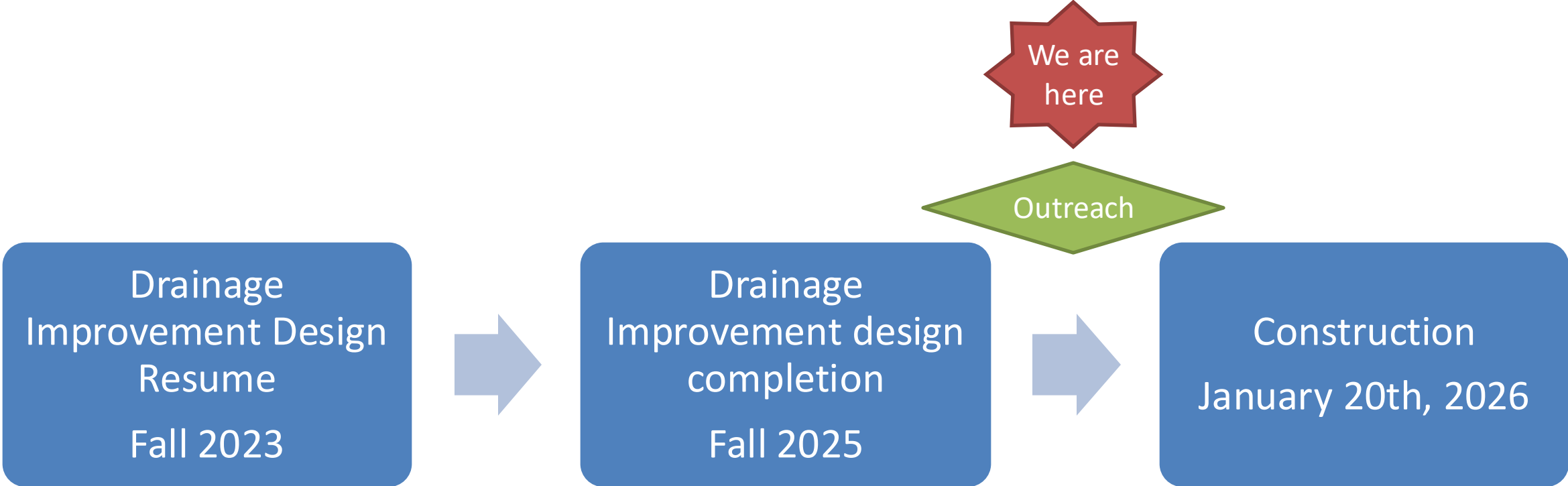
- CONTRACTOR SHALL PROVIDE A MINIMUM OF 11' LANE DURING CONSTRUCTION.
- EXCAVATION MUST BE KEPT SAFE AT ALL TIMES.

ROCK CREEK PARK
U.S. RESERVATION 339

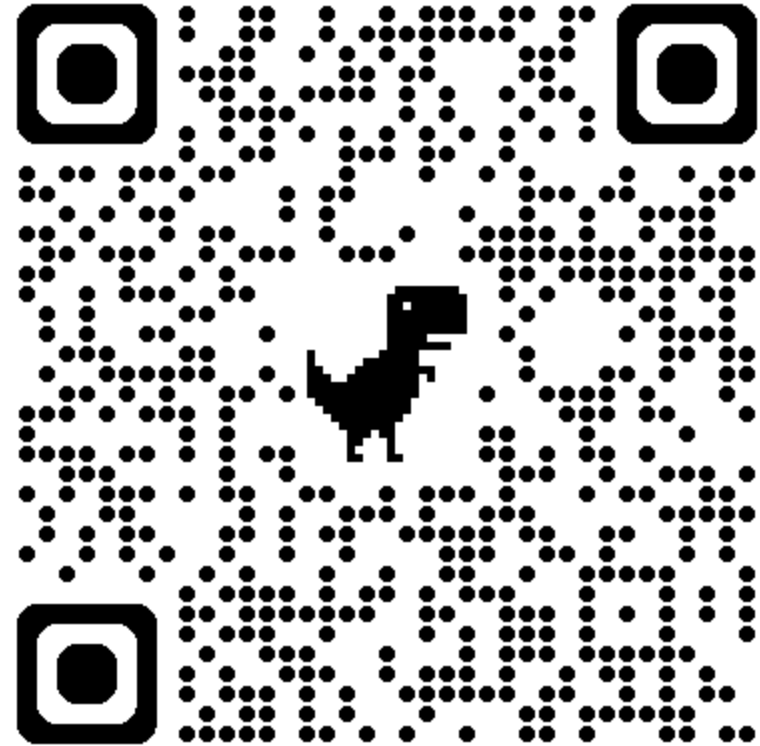
MT - 9

D.C. DEPARTMENT OF TRANSPORTATION
INFRASTRUCTURE PROJECT MANAGEMENT ADMINISTRATION
PROJECT MANAGEMENT DIVISION

Project Schedule and Steps



- ❑ Visit <https://ddot-cp-or-ave-nw-dcgis.hub.arcgis.com/>
- ❑ Project Contact info:
 - Tshreya Bhattarai (tshreya.bhattarai@dc.gov)
- ❑ Use your cellphone barcode scanner to scan the QR code shown in the right to access our DDOT Hubsite





District Department of Transportation

250 M St SE | Washington, DC 20003 | 202.673.6813